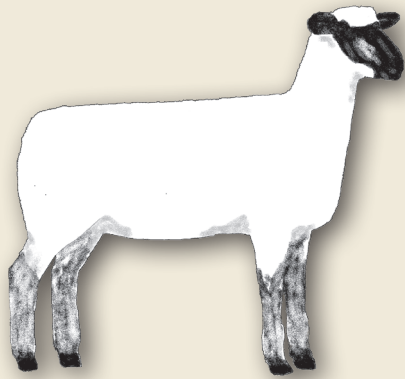


# American Shropshire Registry Association, Inc.



## Judging Standard

### Priority of Judging

1. Soundness
2. Carcass Quality
3. Breed Character
- 4 Size

### SOUNDNESS – 30 POINTS

#### Structural Correctness

- a. Strong and straight topline
- b. Rib long and well sprung
- c. Hips wide and smooth
- d. Rump long, level and wide to dock

#### Sound feet and legs

- a. Strong and correctly set
- b. Upright pasterns
- c. Forelegs straight and strong

#### Good bone

#### Sound mouth

### CARCASS QUALITY – 25 POINTS

Loin broad, long and well-muscled  
Lean, highly muscled carcass  
Leg full, deep and well-muscled  
Forearm well-muscled

### BREED CHARACTER – 25 POINTS

#### Head

Naturally clean dark face (not jet black), gray nose not objectionable. No sign of horns. White wool, covering the whole poll. Nose straight, masculine on rams, feminine on ewes. Straight or slightly dished face. Eyes bright and alert.

#### Ears

Alert and well set, thin to moderate thickness, medium length, color same as face and legs.

#### Neck

Proportional, with clean throat, fitting into the shoulders in graceful lines.

#### Legs

Strong and correctly set with substance of bone, upright pasterns. Light colored wool below hock and knees (not black wool).

### SIZE – 10 POINTS

Medium sized, appropriate to age of animal

### GENERAL APPEARANCE – 10 POINTS

Alert, attractive and stylish appearance, showing the true characteristics of the Shropshire. Shoulders blending smoothly into the ribs. A full heart girth, strong and straight back with adequate body capacity.

### SLICK SHEARING

It is strongly suggested that all Shropshire sheep be exhibited slick shorn. Slick shorn is defined as being shorn completely to the hide within five days of the show date. The wool may be left from the rear hock down and the front knees down plus the wool cap defined as from the ears and poll forward.

### DISCRIMINATIONS

Black fiber, wool blindness, bare bellies, or coarse wool on breech. Excessive white on face, throat and legs. Excessive wool-free areas around vulva, udder or scrotum. Ears thick-skinned, coarse or excessively long or drooping. Coarse or Roman nose. Obesity or lack of thrift, systems indicating systemic infection or chronic illness. Stubs or scurs. Lack of wool cap, jet black face or leg color. Black arm pits, lack of wool below hocks and knees. Spots on face, throat, ears or legs, wrinkles.

### DISQUALIFICATIONS

Lack of breed type, horns, over or under shot jaw. Severely splayed hooves, very weak pasterns, severely post-legged or sickle hocked. Evidence of existing or surgically altered faults such as inverted eyelids, hernia, prolapse, abnormal sexual organs, hides that are black, blue or gray.